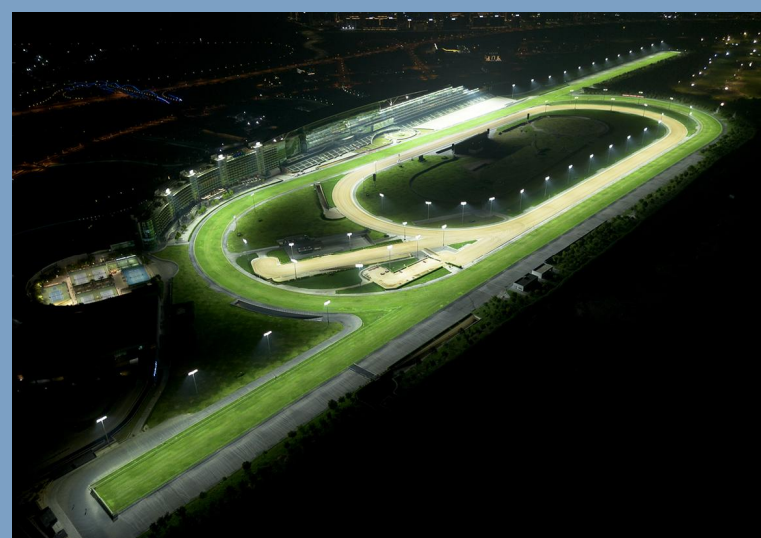


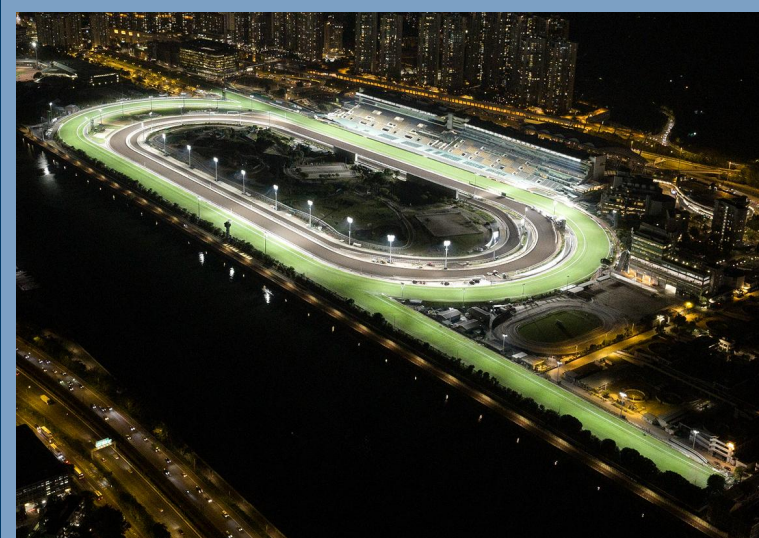
Sowell Racecourse, Rolleston, East Midlands, UK



Barbados Turf Club, Bridgetown, Barbados



Meydan Racecourse, Dubai, UAE



Sha Tin Racecourse, Hong Kong, China

## Orange Greyhound Track

Orange, NSW



Sales Representative: Sanjay Prakash · Designed By: Alex (Sunnie) · Design No.: 249018A · November 04, 2025

**LIGHTING SYSTEM**

Structure/Fixture Summary						
Structure ID	Structure Height	Fixt. Attachment Ht.	Fixture Qty	Fixture Type	Load	Circuit
A1	21.0 m	21.0 m	3	TLC-LED-1200	3.51 kW	A
A2	21.0 m	21.0 m	6	TLC-LED-1200	7.02 kW	A
A3-A4	21.0 m	21.0 m	2	TLC-LED-1200	2.34 kW	B
		21.0 m	6	TLC-LED-1200	7.02 kW	A
A5	21.0 m	21.0 m	3	TLC-LED-1200	3.51 kW	A
B1	21.3 m	21.3 m	3	TLC-LED-1200	3.51 kW	A
B2-B4	21.3 m	21.3 m	5	TLC-LED-1200	5.85 kW	A
B5-B10	21.3 m	21.3 m	6	TLC-LED-1200	7.02 kW	A
B11-B13	21.3 m	21.3 m	5	TLC-LED-1200	5.85 kW	A
B14	21.3 m	21.3 m	3	TLC-LED-1200	3.51 kW	A
B15-B16	21.3 m	21.3 m	2	TLC-LED-1200	2.34 kW	A
<b>21</b>			<b>104</b>		<b>121.68 kW</b>	

Circuit Summary			
Circuit	Description	Load	Fixture Qty
A		117.00 kW	100
B		4.68 kW	4

Fixture Type Summary								
Type	Circuit	Source	Wattage	Lumens	L90	L80	L70	Quantity
TLC-LED-1200	A	LED 5700K - 75 CRI	1170W	150,000	>120,000	>120,000	>120,000	100
TLC-LED-1200	B	LED 5700K - 75 CRI	1170W	150,000	>120,000	>120,000	>120,000	4

Single Fixture Amperage Draw Chart						
Driver Specifications (.90 min power factor)	Line Amperage Per Fixture (max draw)					
	220	230	240	380	400	415
Single Phase Voltage	(50)	(50)	(50)	(50)	(50)	(50)
TLC-LED-1200	6.5	6.3	6.0	3.8	3.6	3.5

Light Level Summary								
Calculation Grid Summary								
Grid Name	Calculation Metric	Illumination Ave					Circuits	Fixture Qty
		Ave	Min	Max	Min/Max	Min/Ave		
01 Track - Eh	Horizontal	964.5	781.8	1211.5	0.65	0.81	A	100
02 Track - Ev	Main Camera	762.6	614.1	1008.6	0.61	0.81	A	100
03 Finish Line	Main Camera	3312.4	3062.7	3559.2	0.86	0.92	A,B	104
04 Spill - Commercial	Max Candela (by Fixture)	0.0	0.0	0.0	-	-	A,B	104
04 Spill - Commercial	True Max Vert Illuminance	0.0	0.0	0.0	-	-	A,B	104
05 T1 - Perc Griffith Way ↑	Tl: @ -5	0.0	0.0	0.0	-	-	A,B	104
06 T1 - Perc Griffith Way ↓	Tl: @ 175	0.0	0.0	0.0	-	-	A,B	104

**Guaranteed Performance:** The ILLUMINATION described above is guaranteed per your Musco Warranty document.

**Field Measurements:** Individual field measurements may vary from computer-calculated predictions.

**Electrical System Requirements:** Refer to Amperage Draw Chart and/or the "Musco Control System Summary" for electrical sizing.

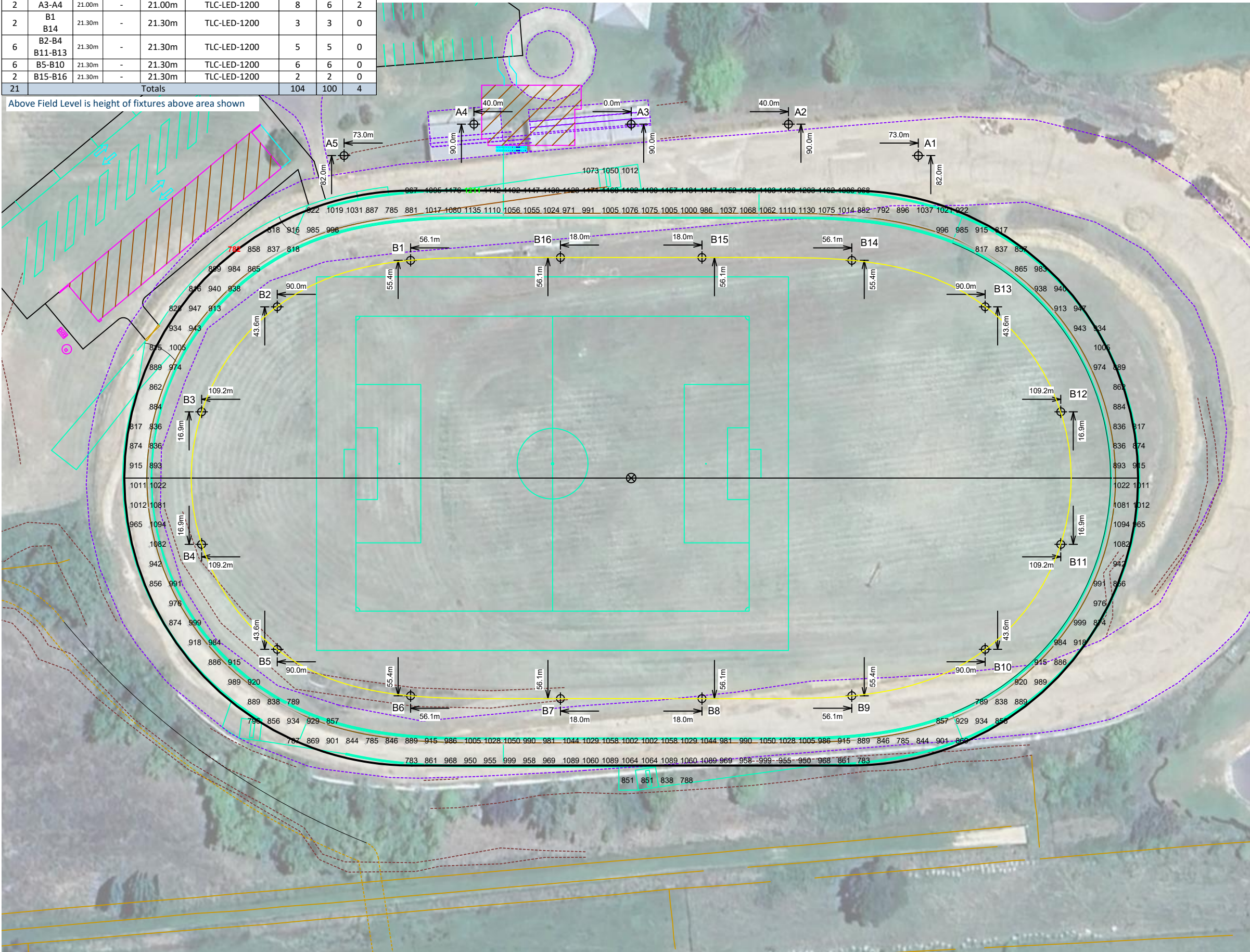
**Installation Requirements:** Results assume 73% nominal voltage at line side of the driver and structures located within 3 feet (1m) of design locations.



### Equipment List For Areas Shown

Structure		Fixtures						
QTY	STRUCTURE ID	SIZE	GRADE ELEVATION	ABOVE FIELD LEVEL	FIXTURE TYPE	QTY/POLE	THIS GRID	OTHER GRIDS
2	A1 A5	21.00m	-	21.00m	TLC-LED-1200	3	3	0
1	A2	21.00m	-	21.00m	TLC-LED-1200	6	6	0
2	A3-A4	21.00m	-	21.00m	TLC-LED-1200	8	6	2
2	B1 B14	21.30m	-	21.30m	TLC-LED-1200	3	3	0
6	B2-B4 B11-B13	21.30m	-	21.30m	TLC-LED-1200	5	5	0
6	B5-B10	21.30m	-	21.30m	TLC-LED-1200	6	6	0
2	B15-B16	21.30m	-	21.30m	TLC-LED-1200	2	2	0
21	Totals					104	100	4

Above Field Level is height of fixtures above area shown



## Orange Greyhound Track

Orange, NSW

### Grid Summary

Name: 01 Track - Eh  
 Size: Irregular  
 Spacing: 5.0m x 5.0m  
 Height: 0.0m above grade

### Illumination Summary

	ENTIRE GRID	MAINTAINED HORIZONTAL LUX
Scan Average:	964.5	
Maximum:	1211.5	
Minimum:	781.8	
Min/Avg:	0.81	
Min/Max:	0.65	
UG (adjacent pts):	1.34	
CU:	0.37	
No. of Points:	234	
<b>FIXTURE INFORMATION</b>		
Applied Circuits:	A	
No. of Fixtures:	100	
Total Load:	117.00 kW	

**Guaranteed Performance:** The ILLUMINATION described above is guaranteed per your Musco Warranty document.

**Field Measurements:** Individual field measurements may vary from computer-calculated predictions.

**Electrical System Requirements:** Refer to Amperage Draw Chart and/or the "Musco Control System Summary" for electrical sizing.

**Installation Requirements:** Results assume 73% nominal voltage at line side of the driver and structures located within 3 feet (1m) of design locations.

SCALE IN METERS 1 : 1000



Pole location(s) ⊕ dimensions are relative to 0,0 reference point(s) ⊗

ENGINEERED DESIGN By: Alex (Sunnie) • File #249018A • 04-Nov-25



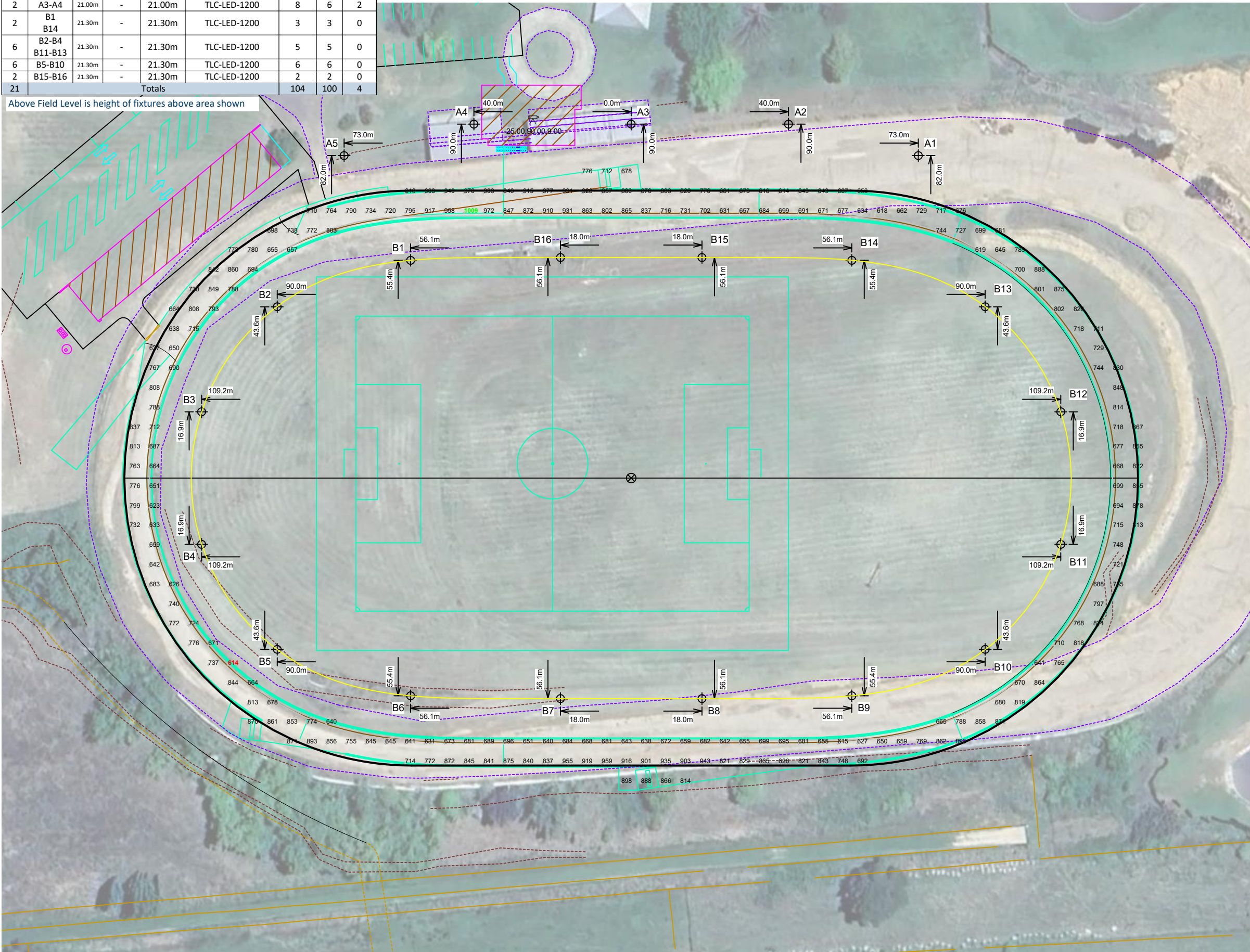
Not to be reproduced in whole or part without the written consent of Musco Sports Lighting, LLC. ©1981, 2025 Musco Sports Lighting, LLC.

## ILLUMINATION SUMMARY

### Equipment List For Areas Shown

Structure		Fixtures						
QTY	STRUCTURE ID	SIZE	GRADE ELEVATION	ABOVE FIELD LEVEL	FIXTURE TYPE	QTY/POLE	THIS GRID	OTHER GRIDS
2	A1 A5	21.00m	-	21.00m	TLC-LED-1200	3	3	0
1	A2	21.00m	-	21.00m	TLC-LED-1200	6	6	0
2	A3-A4	21.00m	-	21.00m	TLC-LED-1200	8	6	2
2	B1 B14	21.30m	-	21.30m	TLC-LED-1200	3	3	0
6	B2-B4 B11-B13	21.30m	-	21.30m	TLC-LED-1200	5	5	0
6	B5-B10	21.30m	-	21.30m	TLC-LED-1200	6	6	0
2	B15-B16	21.30m	-	21.30m	TLC-LED-1200	2	2	0
21	Totals					104	100	4

Above Field Level is height of fixtures above area shown



## Orange Greyhound Track

Orange, NSW

### Grid Summary

Name: 02 Track - Ev  
 Size: Irregular  
 Spacing: 5.0m x 5.0m  
 Height: 1.0m above grade

### Illumination Summary

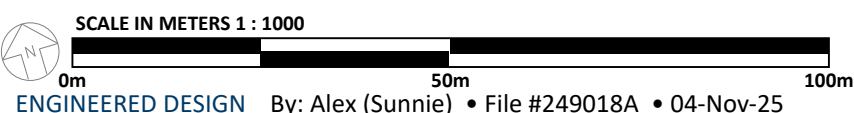
	Entire Grid
Scan Average:	762.6
Maximum:	1008.6
Minimum:	614.1
Min/Avg:	0.81
Min/Max:	0.61
UG (adjacent pts):	1.42
CU:	0.38
No. of Points:	232
<b>FIXTURE INFORMATION</b>	
Applied Circuits:	A
No. of Fixtures:	100
Total Load:	117.00 kW

**Guaranteed Performance:** The ILLUMINATION described above is guaranteed per your Musco Warranty document.

**Field Measurements:** Individual field measurements may vary from computer-calculated predictions.

**Electrical System Requirements:** Refer to Amperage Draw Chart and/or the "Musco Control System Summary" for electrical sizing.

**Installation Requirements:** Results assume 73% nominal voltage at line side of the driver and structures located within 3 feet (1m) of design locations.



Pole location(s) ⊕ dimensions are relative to 0,0 reference point(s) ⊗



Not to be reproduced in whole or part without the written consent of Musco Sports Lighting, LLC. ©1981, 2025 Musco Sports Lighting, LLC.

## ILLUMINATION SUMMARY

### Equipment List For Areas Shown

QTY	Structure			Fixtures				
	STRUCTURE ID	SIZE	GRADE ELEVATION	ABOVE FIELD LEVEL	FIXTURE TYPE	QTY/POLE	THIS GRID	OTHER GRIDS
2	A1 A5	21.00m	-	21.00m	TLC-LED-1200	3	3	0
1	A2	21.00m	-	21.00m	TLC-LED-1200	6	6	0
2	A3-A4	21.00m	-	21.00m	TLC-LED-1200	8	8	0
2	B1 B14	21.30m	-	21.30m	TLC-LED-1200	3	3	0
6	B2-B4 B11-B13	21.30m	-	21.30m	TLC-LED-1200	5	5	0
6	B5-B10	21.30m	-	21.30m	TLC-LED-1200	6	6	0
2	B15-B16	21.30m	-	21.30m	TLC-LED-1200	2	2	0
21	Totals					104	104	0

Above Field Level is height of fixtures above area shown



## Orange Greyhound Track

Orange, NSW

### Grid Summary

Name: 03 Finish Line  
 Size: Irregular  
 Spacing: 2.0m x 2.0m  
 Height: 1.0m above grade

### Illumination Summary

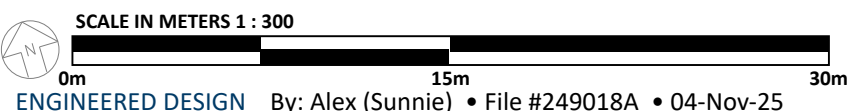
		MAINTAINED TV LUX: Main Camera
		Entire Grid
Scan Average:	3312.4	
Maximum:	3559.2	
Minimum:	3062.7	
Min/Avg:	0.92	
Min/Max:	0.86	
UG (adjacent pts):	1.14	
CU:	0.00	
No. of Points:	4	
<b>FIXTURE INFORMATION</b>		
Applied Circuits:	A,B	
No. of Fixtures:	104	
Total Load:	121.68 kW	

**Guaranteed Performance:** The ILLUMINATION described above is guaranteed per your Musco Warranty document.

**Field Measurements:** Individual field measurements may vary from computer-calculated predictions.

**Electrical System Requirements:** Refer to Amperage Draw Chart and/or the "Musco Control System Summary" for electrical sizing.

**Installation Requirements:** Results assume 73% nominal voltage at line side of the driver and structures located within 3 feet (1m) of design locations.



Pole location(s) ⊕ dimensions are relative to 0,0 reference point(s) ⊗



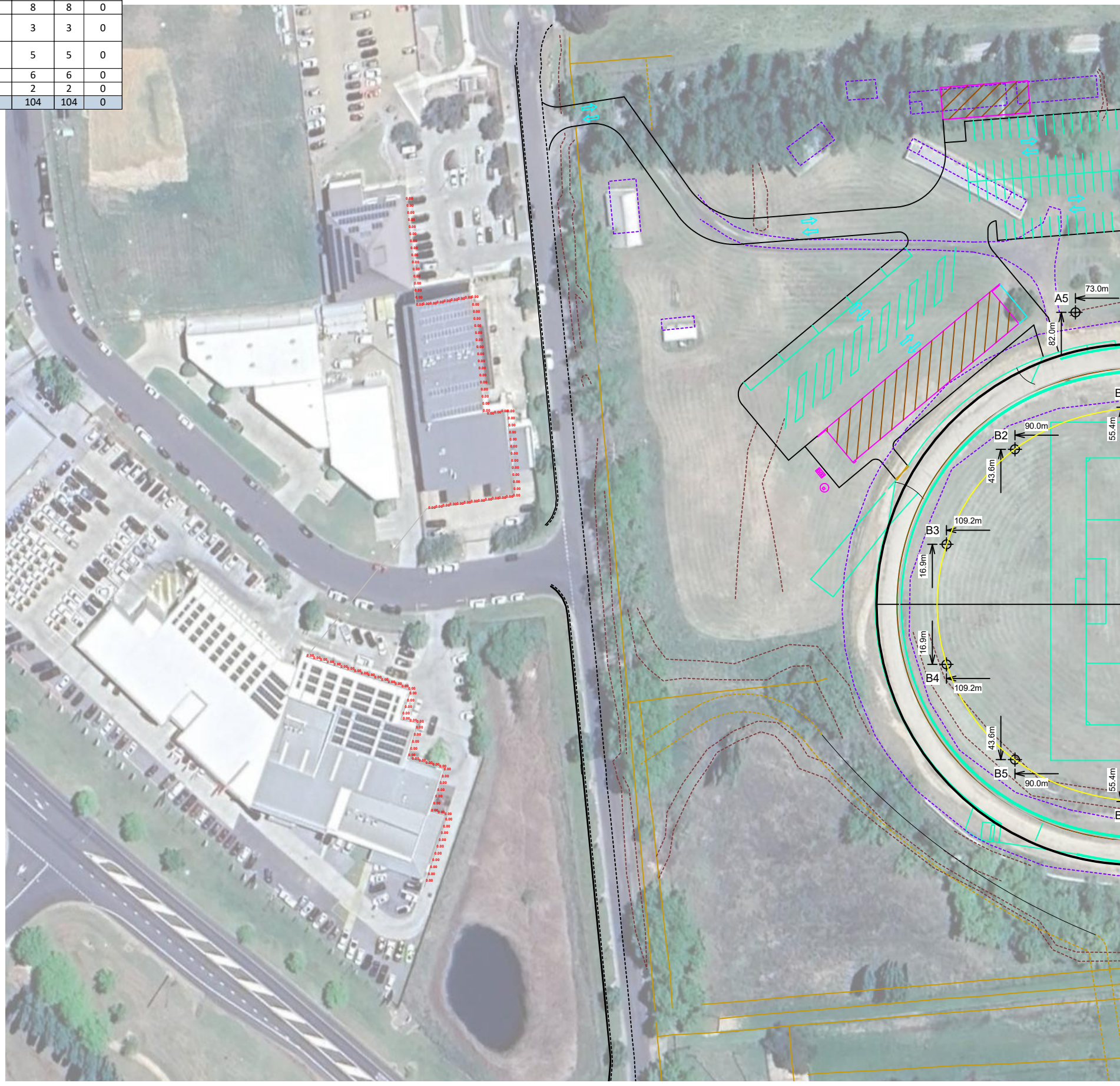
Not to be reproduced in whole or part without the written consent of Musco Sports Lighting, LLC. ©1981, 2025 Musco Sports Lighting, LLC.

## ILLUMINATION SUMMARY

**Equipment List For Areas Shown**

QTY	Structure			Fixtures				
	STRUCTURE ID	SIZE	GRADE ELEVATION	ABOVE FIELD LEVEL	FIXTURE TYPE	QTY/POLE	THIS GRID	OTHER GRIDS
2	A1 A5	21.00m	-	21.00m	TLC-LED-1200	3	3	0
1	A2	21.00m	-	21.00m	TLC-LED-1200	6	6	0
2	A3-A4	21.00m	-	21.00m	TLC-LED-1200	8	8	0
2	B1 B14	21.30m	-	21.30m	TLC-LED-1200	3	3	0
6	B2-B4 B11-B13	21.30m	-	21.30m	TLC-LED-1200	5	5	0
6	B5-B10	21.30m	-	21.30m	TLC-LED-1200	6	6	0
2	B15-B16	21.30m	-	21.30m	TLC-LED-1200	2	2	0
21	Totals					104	104	0

Above Field Level is height of fixtures above area shown



**Orange Greyhound Track**

Orange, NSW

**Grid Summary**

Name:	04 Spill - Commercial
Size:	Irregular
Spacing:	2.0m x 2.0m
Height:	1.5m above grade

**Illumination Summary**

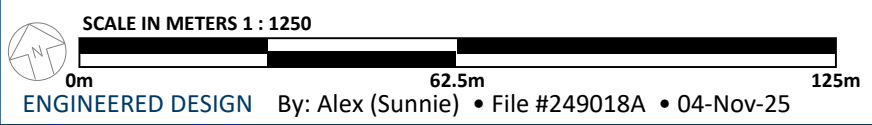
	ENTIRE GRID	MAINTAINED MAX CANDELA (PER FIXTURE)
Scan Average:	0.0	
Maximum:	0.0	
Minimum:	0.0	
Min/Avg:	-	
Min/Max:	-	
UG (adjacent pts):	0.00	
No. of Points:	120	
<b>FIXTURE INFORMATION</b>		
Applied Circuits:	A, B	
No. of Fixtures:	104	
Total Load:	121.68 kW	

**Guaranteed Performance:** The ILLUMINATION described above is guaranteed per your Musco Warranty document.

**Field Measurements:** Individual field measurements may vary from computer-calculated predictions.

**Electrical System Requirements:** Refer to Amperage Draw Chart and/or the "Musco Control System Summary" for electrical sizing.

**Installation Requirements:** Results assume 73% nominal voltage at line side of the driver and structures located within 3 feet (1m) of design locations.



Pole location(s) ⊕ dimensions are relative to 0,0 reference point(s) ⊗



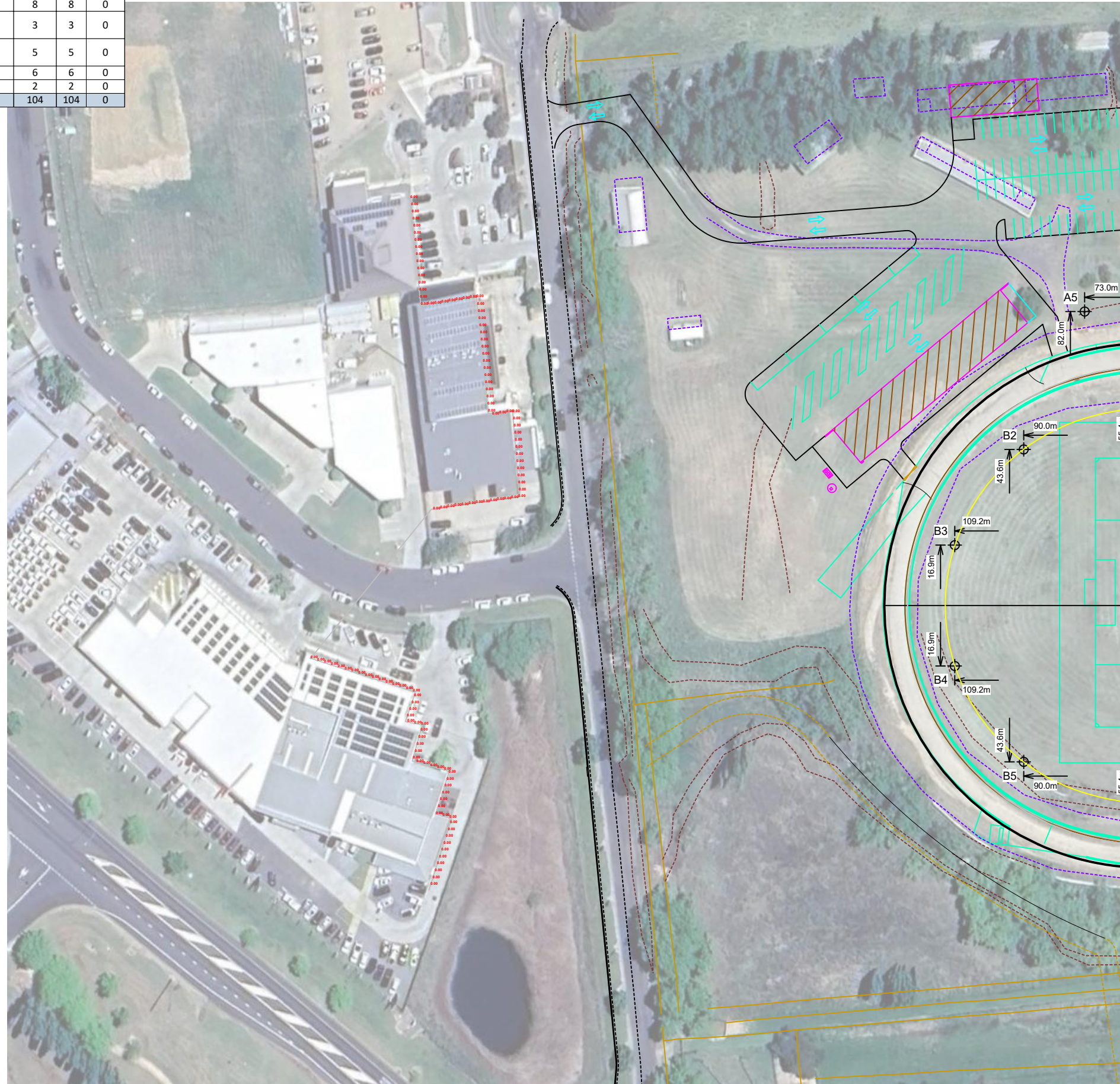
Not to be reproduced in whole or part without the written consent of Musco Sports Lighting, LLC. ©1981, 2025 Musco Sports Lighting, LLC.

**ILLUMINATION SUMMARY**

**Equipment List For Areas Shown**

QTY	Structure			Fixtures				
	STRUCTURE ID	SIZE	GRADE ELEVATION	ABOVE FIELD LEVEL	FIXTURE TYPE	QTY/POLE	THIS GRID	OTHER GRIDS
2	A1 A5	21.00m	-	21.00m	TLC-LED-1200	3	3	0
1	A2	21.00m	-	21.00m	TLC-LED-1200	6	6	0
2	A3-A4	21.00m	-	21.00m	TLC-LED-1200	8	8	0
2	B1 B14	21.30m	-	21.30m	TLC-LED-1200	3	3	0
6	B2-B4 B11-B13	21.30m	-	21.30m	TLC-LED-1200	5	5	0
6	B5-B10	21.30m	-	21.30m	TLC-LED-1200	6	6	0
2	B15-B16	21.30m	-	21.30m	TLC-LED-1200	2	2	0
21	Totals					104	104	0

Above Field Level is height of fixtures above area shown



**Orange Greyhound Track**

Orange, NSW

Grid Summary	
Name:	04 Spill - Commercial
Size:	Irregular
Spacing:	2.0m x 2.0m
Height:	1.5m above grade

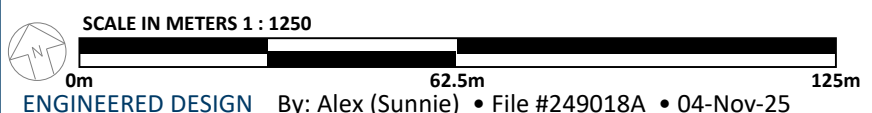
Illumination Summary	
	MAINTAINED VERTICAL LUX: 90° TIR
Scan Average:	0.0
Maximum:	0.0
Minimum:	0.0
Min/Avg:	-
Min/Max:	-
UG (adjacent pts):	0.00
No. of Points:	120
<b>FIXTURE INFORMATION</b>	
Applied Circuits:	A, B
No. of Fixtures:	104
Total Load:	121.68 kW

**Guaranteed Performance:** The ILLUMINATION described above is guaranteed per your Musco Warranty document.

**Field Measurements:** Individual field measurements may vary from computer-calculated predictions.

**Electrical System Requirements:** Refer to Amperage Draw Chart and/or the "Musco Control System Summary" for electrical sizing.

**Installation Requirements:** Results assume 73% nominal voltage at line side of the driver and structures located within 3 feet (1m) of design locations.



Pole location(s) ⊕ dimensions are relative to 0,0 reference point(s) ⊗



Not to be reproduced in whole or part without the written consent of Musco Sports Lighting, LLC. ©1981, 2025 Musco Sports Lighting, LLC.

**ILLUMINATION SUMMARY**

**Equipment List For Areas Shown**

Structure				Fixtures				
QTY	STRUCTURE ID	SIZE	GRADE ELEVATION	ABOVE FIELD LEVEL	FIXTURE TYPE	QTY/POLE	THIS GRID	OTHER GRIDS
2	A1 A5	21.00m	-	21.00m	TLC-LED-1200	3	3	0
1	A2	21.00m	-	21.00m	TLC-LED-1200	6	6	0
2	A3-A4	21.00m	-	21.00m	TLC-LED-1200	8	8	0
2	B1 B14	21.30m	-	21.30m	TLC-LED-1200	3	3	0
6	B2-B4 B11-B13	21.30m	-	21.30m	TLC-LED-1200	5	5	0
6	B5-B10	21.30m	-	21.30m	TLC-LED-1200	6	6	0
2	B15-B16	21.30m	-	21.30m	TLC-LED-1200	2	2	0
21	Totals					104	104	0

Above Field Level is height of fixtures above area shown

**Orange Greyhound Track**

Orange, NSW

Grid Summary	
Name:	05 T1 - Perc Griffith Way ↑
Size:	Irregular
Spacing:	2.0m x 2.0m
Height:	1.5m above grade

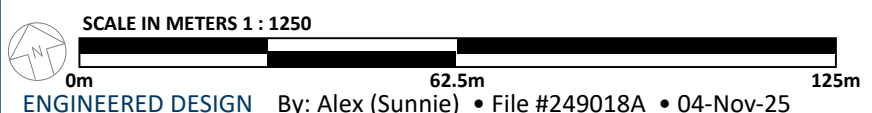
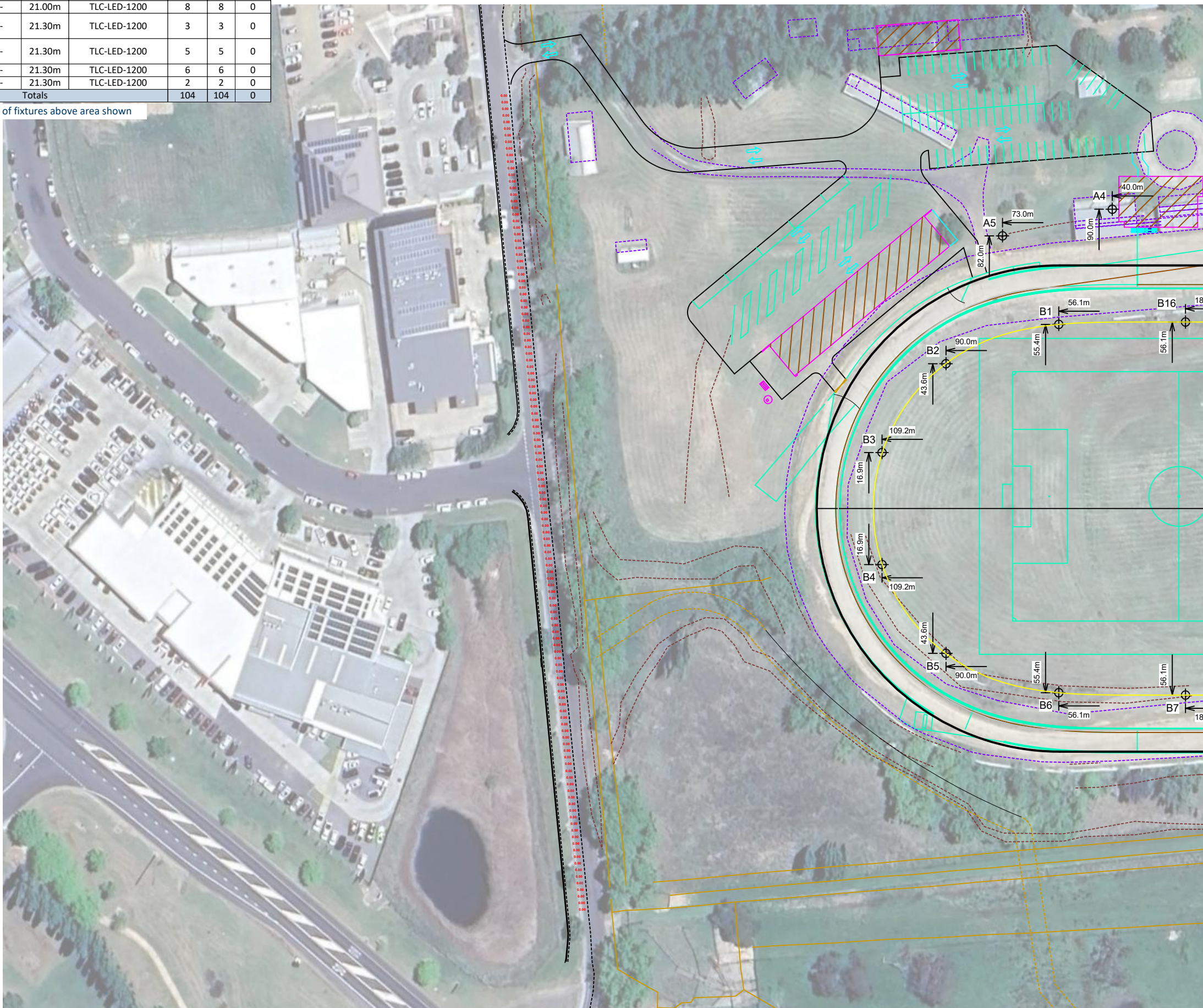
Illumination Summary	
	THRESHOLD INCREMENT: @ -5
Scan Average:	0.0
Maximum:	0.0
Minimum:	0.0
Min/Avg:	-
Min/Max:	-
UG (adjacent pts):	0.00
CU:	0.00
No. of Points:	124
<b>FIXTURE INFORMATION</b>	
Applied Circuits:	A,B
No. of Fixtures:	104
Total Load:	121.68 kW

**Guaranteed Performance:** The ILLUMINATION described above is guaranteed per your Musco Warranty document.

**Field Measurements:** Individual field measurements may vary from computer-calculated predictions.

**Electrical System Requirements:** Refer to Amperage Draw Chart and/or the "Musco Control System Summary" for electrical sizing.

**Installation Requirements:** Results assume 73% nominal voltage at line side of the driver and structures located within 3 feet (1m) of design locations.



Pole location(s) ⊕ dimensions are relative to 0,0 reference point(s) ⊗



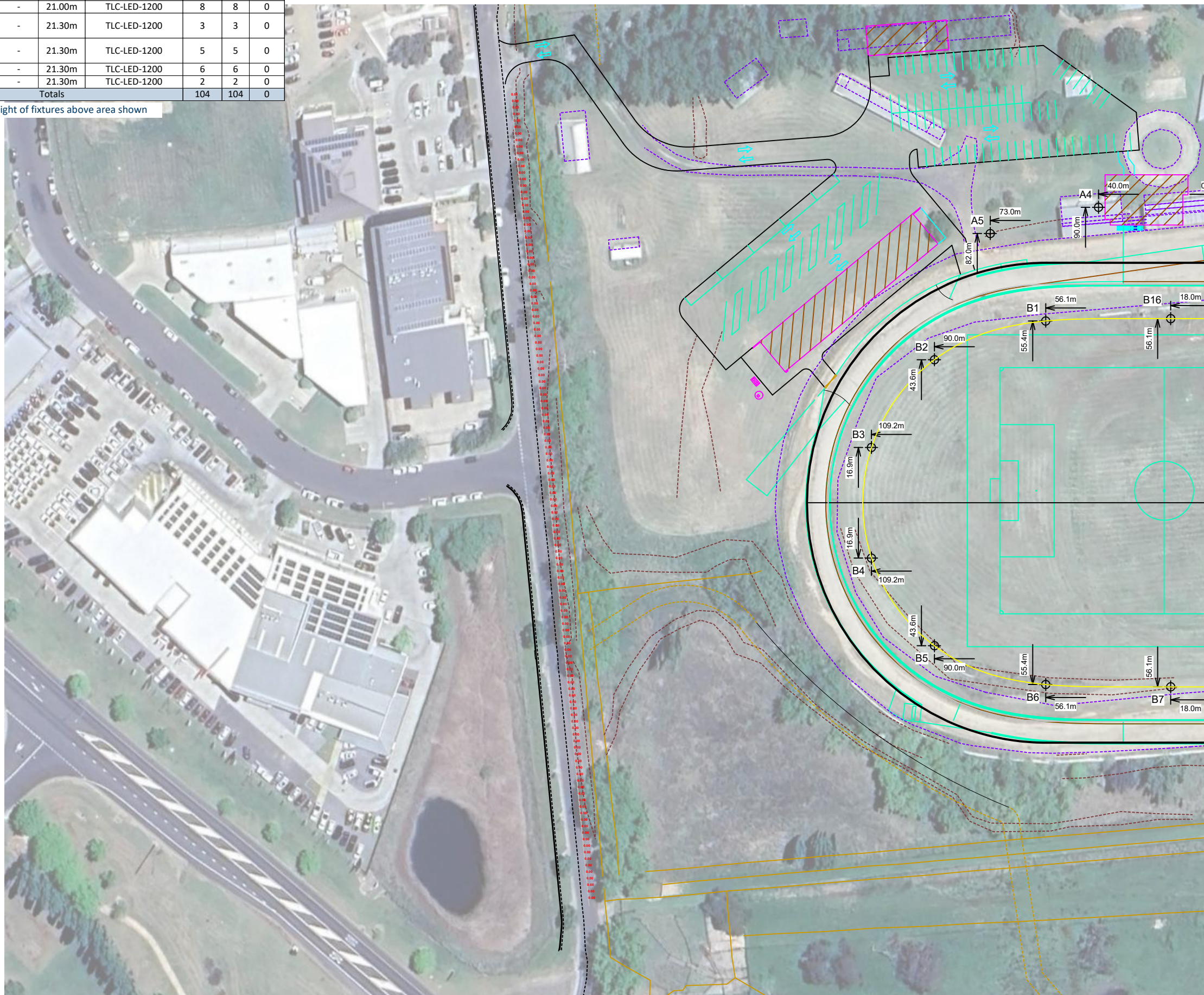
Not to be reproduced in whole or part without the written consent of Musco Sports Lighting, LLC. ©1981, 2025 Musco Sports Lighting, LLC.

**ILLUMINATION SUMMARY**

**Equipment List For Areas Shown**

Structure				Fixtures				
QTY	STRUCTURE ID	SIZE	GRADE ELEVATION	ABOVE FIELD LEVEL	FIXTURE TYPE	QTY/POLE	THIS GRID	OTHER GRIDS
2	A1 A5	21.00m	-	21.00m	TLC-LED-1200	3	3	0
1	A2	21.00m	-	21.00m	TLC-LED-1200	6	6	0
2	A3-A4	21.00m	-	21.00m	TLC-LED-1200	8	8	0
2	B1 B14	21.30m	-	21.30m	TLC-LED-1200	3	3	0
6	B2-B4 B11-B13	21.30m	-	21.30m	TLC-LED-1200	5	5	0
6	B5-B10	21.30m	-	21.30m	TLC-LED-1200	6	6	0
2	B15-B16	21.30m	-	21.30m	TLC-LED-1200	2	2	0
21	Totals					104	104	0

Above Field Level is height of fixtures above area shown



**Orange Greyhound Track**

Orange, NSW

Grid Summary	
Name:	06 T1 - Perc Griffith Way ↓
Size:	Irregular
Spacing:	2.0m x 2.0m
Height:	1.5m above grade

Illumination Summary	
	THRESHOLD INCREMENT: @ 175
Scan Average:	0.0
Maximum:	0.0
Minimum:	0.0
Min/Avg:	-
Min/Max:	-
UG (adjacent pts):	0.00
CU:	0.00
No. of Points:	124
<b>FIXTURE INFORMATION</b>	
Applied Circuits:	A,B
No. of Fixtures:	104
Total Load:	121.68 kW

**Guaranteed Performance:** The ILLUMINATION described above is guaranteed per your Musco Warranty document.

**Field Measurements:** Individual field measurements may vary from computer-calculated predictions.

**Electrical System Requirements:** Refer to Amperage Draw Chart and/or the "Musco Control System Summary" for electrical sizing.

**Installation Requirements:** Results assume 73% nominal voltage at line side of the driver and structures located within 3 feet (1m) of design locations.

SCALE IN METERS 1 : 1250

ENGINEERED DESIGN By: Alex (Sunnie) • File #249018A • 04-Nov-25

Pole location(s) ⊕ dimensions are relative to 0,0 reference point(s) ⊗



Not to be reproduced in whole or part without the written consent of Musco Sports Lighting, LLC. ©1981, 2025 Musco Sports Lighting, LLC.

**ILLUMINATION SUMMARY**

# Orange Greyhound Track

Orange, NSW

## Equipment Layout

**INCLUDES:**  
· Track

**Electrical System Requirements:** Refer to Amperage Draw Chart and/or the "Musco Control System Summary" for electrical sizing.

**Installation Requirements:** Results assume 73% nominal voltage at line side of the driver and structures located within 3 feet (1m) of design locations.

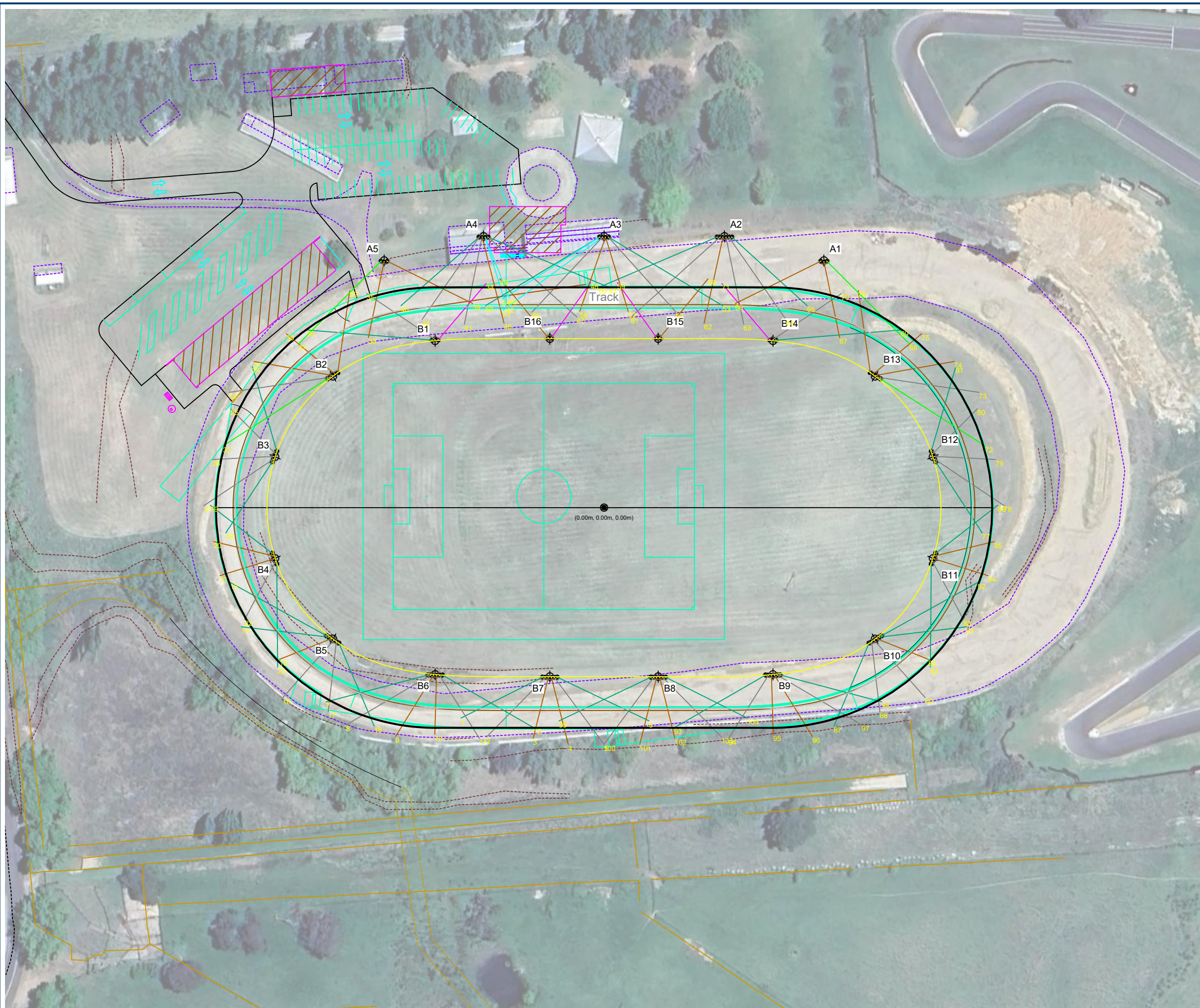
## Equipment List For Areas Shown

QTY	Structure			Fixtures		
	STRUCTURE ID	SIZE	GLOBAL ELEVATION	ABOVE GLOBAL LEVEL	FIXTURE TYPE	QTY/POLE
2	A1 A5	21.00m	-	21.00m	TLC-LED-1200	3
1	A2	21.00m	-	21.00m	TLC-LED-1200	6
2	A3-A4	21.00m	-	21.00m	TLC-LED-1200	8
2	B1 B14	21.30m	-	21.30m	TLC-LED-1200	3
6	B2-B4 B11-B13	21.30m	-	21.30m	TLC-LED-1200	5
6	B5-B10	21.30m	-	21.30m	TLC-LED-1200	6
2	B15-B16	21.30m	-	21.30m	TLC-LED-1200	2
21	Totals					104

Above Global Level is height of fixtures above design (0,0,0)

## Single Fixture Amperage Draw Chart

Driver Specifications (.90 min power factor)	Line Amperage Per Fixture (max draw)					
	220 (50)	230 (50)	240 (50)	380 (50)	400 (50)	415 (50)
TLC-LED-1200	6.5	6.3	6.0	3.8	3.6	3.5



SCALE IN METERS 1 : 1250  
0m 62.5m 125m  
ENGINEERED DESIGN By: Alex (Sunnie) • File #249018A • 04-Nov-25

Pole location(s) ⊕ dimensions are relative to 0,0 reference point(s) ⊗



Not to be reproduced in whole or part without the written consent of Musco Sports Lighting, LLC. ©1981, 2025 Musco Sports Lighting, LLC.



Musco Lighting Australia, PTY Ltd  
Unit 1, 28 Barcoo Street  
Chatswood NSW Australia 2067

Phone: +61 2 9417 0100  
Fax: +61 2 9417 7122  
www.musco.com.au

5 November 2025

Peter Basha  
Basha planning & Development

Dear Peter

The lighting design (#249018A) provided by Musco Lighting Australia Pty Ltd for the Orange Greyhound Racing Track, located in Orange, NSW is designed for TV broadcast requirements for Greyhound NSW. The details of the lighting design are provided below including its obtrusive effects and impact on the neighbouring areas around the track.

#### Track Lighting Design

The lighting design consists of a total of 62 luminaires and 15 poles in total (12) off 15m (referenced P4-P15 on the lighting design) and (3) off 21m poles (referenced P1-P3 on the lighting design). Poles P2 and P3 have 4 light fixtures which are required for the photo finish requirements. The proposed light fixtures for the project are the TLC-LED-1200.

Greyhound NSW Standards	Minimum light level	Uniformity Min/Avg	Lighting Design Results	Uniformity Min/Avg	Compliance
Vertical	500 lux	0.8	614	0.8	Complies
Horizontal	500 lux	0.8	781	0.8	Complies
Photo Finish	500 lux	0.8	3312	0.92	Complies

#### Spill Light Compliance

The control of light and minimising spill and glare in the lighting design is detailed further below confirming compliance with AS4282:2023 per environmental zone A4.

Lighting Calculation	AS 4282 requirement Non-curfew	AS 4282 requirement Curfew	Design Result at commercial areas	Compliance
Maximum vertical illuminance (Ev) lux	25 lux	5 lux	0 lux	Complies

Lighting Calculation – Upward Light Ratio	AS 4282 requirement Maximum Upward Light Ratio ULR	Design result	Compliance
TLC-LED-1200	2%	0%	Complies

Lighting Calculation	AS 4282 requirement Non-curfew L1	Design Result at commercial areas	Compliance
Maximum luminous intensity per luminaire (I), cd	25000	0	Complies

The light fixtures have spill and glare visors (refer to the attached photos) which shield the light source from being visible to road traffic and the neighbouring areas. The spill and glare visors together with the optics of the light fixture control the light onto the track surface minimises wasted light and prevents the transmission of stray light above the horizon, reducing sky glow.

We hereby confirm that the lighting design complies with the requirements of GRNSW together with the spill light level requirements of AS4282.

Thanking you kindly.

Best regards



Sanjay Prakash  
Musco Lighting Australia

# Total Light Control™ – TLC-LED-1200 Luminaire



©2023 Musco Sports Lighting, LLC · U.S. and foreign patents issued and pending · M-3046-en04-2



Solutions for Lighting